

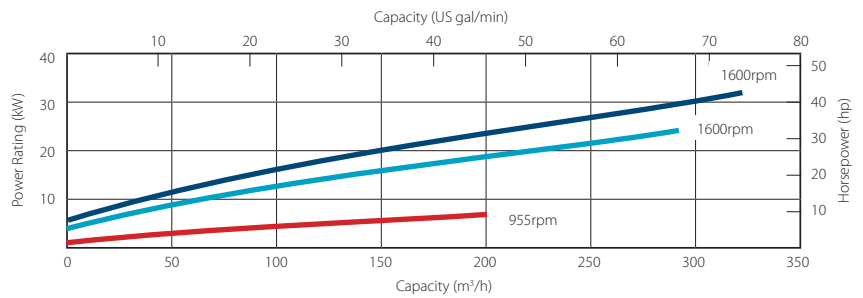
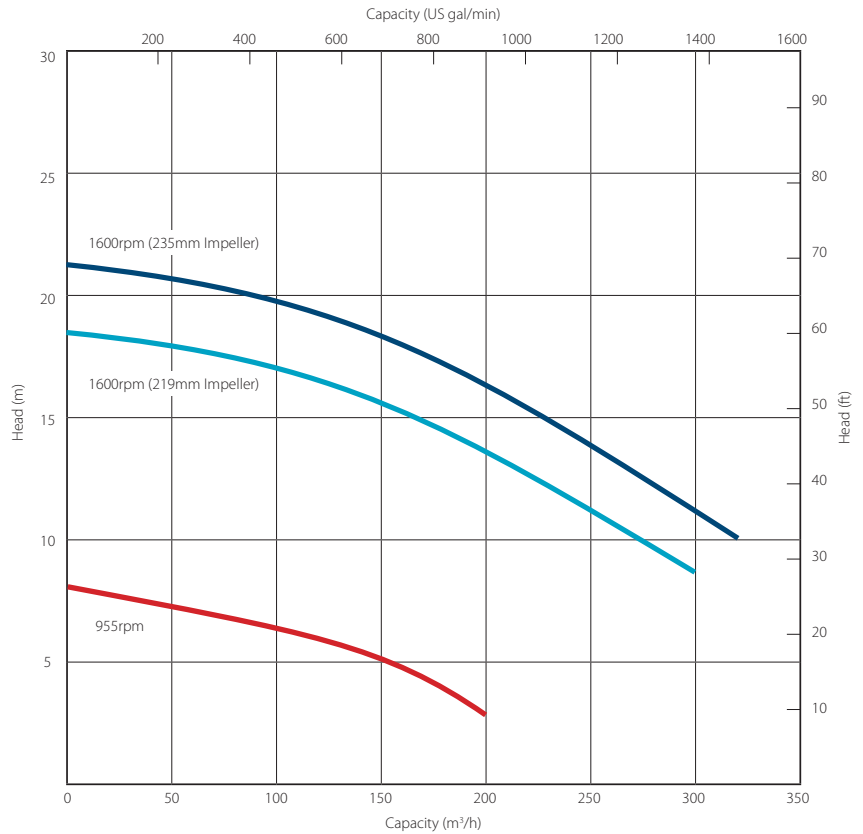
Solids handling 'S' pump

Pump end specification		
	Metric	US
Capacity	320 m ³ /h	1408 gpm
Total Head	21.3 m	70 ft
Max. Solids Size	100 mm	4 in
Self Priming Lift	8.8 m	28 ft
Air Handling	24 l/s	50 cfm
Selprime® Absorbs	2.2 kW	3 hp
Power Required	24 - 32 kW	32 - 44 hp
Pump Speed Max.	1600 rpm	1600 rpm
Pump Speed Min.	955rpm	955 rpm
Impeller Type	Vortex	Vortex
Impeller Blades	6	6
Impeller Diameter	219 mm 235 mm	8.6 in 9.25 in
Inlet Port	DN 150 PN6	6 PN6
Outlet Port	DN 150 PN6	6 PN6
Length	102 cm	40.2 in
Width	70 cm	27.6 in
Height	82 cm	32.3 in
Weight	315 kg	694 lb

Priming method - Selprime®

The unique original Selwood self priming system utilising a water tolerant diaphragm air pump. An environmentally friendly design that has none of the problems of oil vapour emissions and oil emulsification associated with other priming systems.

Pump end materials	
Pump Casing	Grey Iron BSEN 1561 Grade EN-GJL-200
Impeller	Cast Iron BSEN 1563 Grade EN-GJS-450-10
Wear Plates	NA
Shaft	Steel BS EN 10277 Grade C40+C
NRV Body	Grey Iron BSEN 1561 Grade EN-GJL-200
Mechanical Seal	Silicon Carbide v Silicon Carbide
Pump End Bearing	Ball
Drive End Bearing	Cylindrical Roller



Solids handling 'S' pump builds

Our 'S Range' pumps are the market-leader when it comes to solids handling.

The vortex-flow design (Seltorque®), Selprime® automatic self-priming, emission compliant engines and ease of operation means trouble-free pumping of

- S** raw and screened sewage
- S** sludge or slurry
- S** water with fine and large solids
- S** water containing rags and fibres



Standard builds	4 Wheel Site*		Skid*		Super Silent		Super Silent	
	Metric	US	Metric	US	Metric	US	Metric	US
Length	271 cm	107 in	200cm	79 in	245 cm	96 in	239 cm	94 in
Width	243cm	96 in	100 cm	39 in	152 cm	60 in	149 cm	59 in
Height	143 cm	53 in	148 cm	58 in	174 cm	68 in	173 cm	68 in
Dry Weight	920 kg	2028 lb	995 kg	2194 lb	1763 kg	3887 lb	1698 kg	3743 lb
Gross Weight	1010 kg	2227 lb	1083 kg	2388 lb	1945 kg	4288 lb	1880 kg	4145 lb
Sound Power	103 LWA		109 LWA		92 LWA		101 LWA	
Sound Pressure @ 1m (3ft)	95 db(A)		101 db(A)		72 db(A)		71 db(A)	
Sound Pressure @ 7m (23ft)	78 db(A)		84 db(A)		63 db(A)		62 db(A)	
Pump SAE Size	bare shaft		bare shaft		bare shaft		bare shaft	
Engine / Motor	Deutz D2011L04i		Deutz D2011L04i		Deutz D2011L04i		Isuzu 4JG1	
Emission Rating	EU Stage IIIA	NA	EU Stage IIIA	NA	EU Stage IIIA	NA	EU Stage II LRA	NA
Engine / Motor Max Speed	1600 rpm		1600 rpm		1600 rpm		1600 rpm	
Fuel Tank Capacity.**	105 lt	28 US gal	105 lt	28 US gal	219 lt	58 US gal	219 lt	58 US gal
BEP - Fuel Consumption	5.4 lt/hr	1.43 US gal/hr	5.4 lt/hr	1.43 US gal/hr	4.9 lt/hr	1.29 US gal/hr	3.3 lt/hr	0.72 US gal/hr

*Open sets exclude fittings

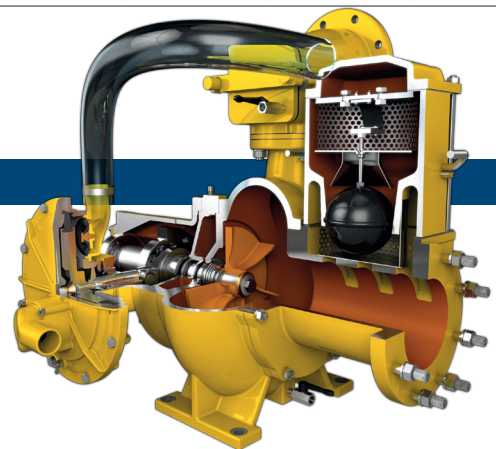
** Fuel tank capacity can be increased with the addition of an auxiliary fuel tank.

Installation drawings are available upon request.

Optional extras

- Training
- Genuine parts
- Valves / Fittings
- Pump accessories
- Tanks & filtration
- Pipe stoppers

- Auto stop/start control panels
- Pump telemetry
- Oil drain kit
- Bulk fuel kit
- Chalwyn valve & spark arrestor
- Hose / pipework



SELWOOD
www.selwood.co.uk

Bournemouth Road
Chandler's Ford, Eastleigh
Hampshire
SO53 3ZL UK

T +44(0) 23 8026 6311
E info@selwood.co.uk