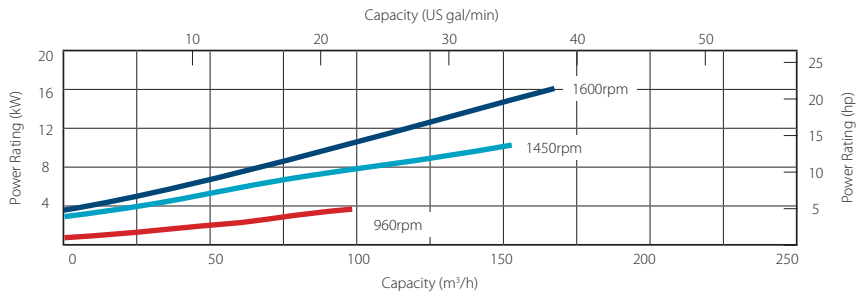
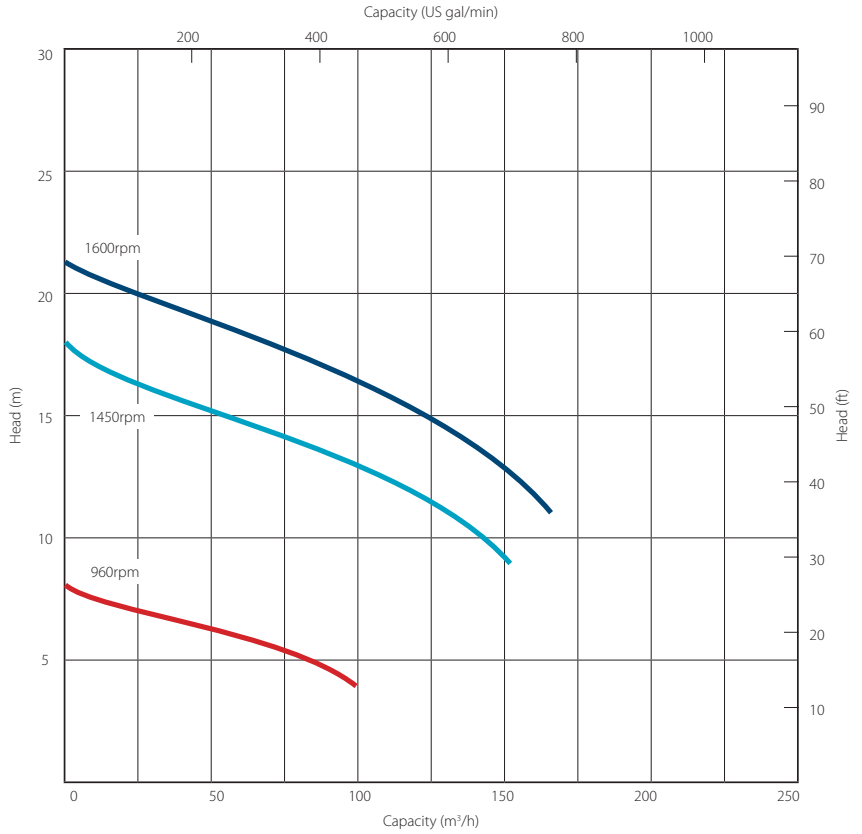


# Solids handling 'S' pump

Pump end specification		
	Metric	US
Capacity	165 m <sup>3</sup> /h	726 gpm
Total Head	21.3 m	70 ft
Max. Solids Size	75 mm	3 in
Self Priming Lift	8.8 m	28 ft
Air Handling	24 l/s	50 cfm
Selprime® Absorbs	2.2 kW	3 hp
Power Required	16 kW	21 hp
Pump Speed Max.	1600 rpm	1600 rpm
Pump Speed Min.	960 rpm	960 rpm
Impeller Type	Vortex	Vortex
Impeller Blades	6	6
Impeller Diameter	215 mm	8.5 in
Inlet Port	DN 100 PN6	6 PN6
Outlet Port	DN 100 PN6	6 PN6
Length	93 cm	36.6 in
Width	68 cm	26.8 in
Height	71 cm	28.0 in
Weight	225 kg	496 lb



**Priming method - Selprime®**

The unique original Selwood self priming system utilising a water tolerant diaphragm air pump. An environmentally friendly design that has none of the problems of oil vapour emissions and oil emulsification associated with other priming systems.

Pump end materials	
Pump Casing	Grey Iron BSEN 1561 Grade EN-GJL-200
Impeller	Cast Iron BSEN 1563 Grade EN-GJS-450-10
Wear Plates	NA
Shaft	Steel BS EN 10277 Grade C40+C
NRV Body	Grey Iron BSEN 1561 Grade EN-GJL-200
Mechanical Seal	Ceramic v Silicon Carbide
Pump End Bearing	Ball
Drive End Bearing	Cylindrical Roller

# Solids handling 'S' pump builds

**Our 'S Range' pumps are the market-leader when it comes to solids handling.**

The vortex-flow design (Seltorque®), Selprime® automatic self-priming, emission compliant engines and ease of operation means trouble-free pumping of

- S** raw and screened sewage
- S** sludge or slurry
- S** water with fine and large solids
- S** water containing rags and fibres



Standard builds	Skid*		Super Silent	
	Metric	US	Metric	US
Length	175 cm	69 in	233 cm	92 in
Width	100cm	39 in	153 cm	60 in
Height	129 cm	51 in	178 cm	70 in
Dry Weight	845 kg	1863 lb	1620 kg	3571 lb
Gross Weight	933 kg	2057 lb	1802 kg	3973 lb
Sound Power	109 LWA 89 db(A) 84 db(A)		87 LWA 65 db(A) 56 db(A)	
Pump SAE Size	bare shaft		close coupled	
Motor	Deutz D2011L03i		Isuzu 4LE2T or 4LE1	
Emission Rating	EU Stage IIIA	NA	EU Stage IIIA	NA
Engine / Motor Max Speed	1600 rpm		1600 rpm	
Fuel Tank Capacity.**	105 lt	28 US gal	219 lt	58 US gal
BEP - Fuel Consumption	3.2 lt/hr	0.85 US gal/hr	3.1 lt/hr	0.68 US gal/hr

\*Open sets exclude fittings

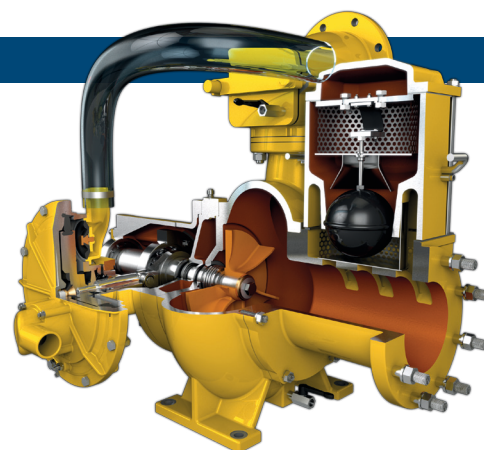
\*\* Fuel tank capacity can be increased with the addition of an auxiliary fuel tank.

Installation drawings are available upon request.

## Optional extras

- Training
- Genuine parts
- Valves / Fittings
- Pump accessories
- Tanks & filtration

- Pipe stoppers
- Auto stop/start control panels
- Pump telemetry
- Oil drain kit
- Hose / pipework



**SELWOOD**  
www.selwood.co.uk

Bournemouth Road  
Chandler's Ford, Eastleigh  
Hampshire  
SO53 3ZL UK

**T** +44(0) 23 8026 6311  
**E** info@selwood.co.uk